



## Remote Monitoring System (RMS)

Measure, Monitor and Notify



Supports multiple engines, bunkers and engines parameters.

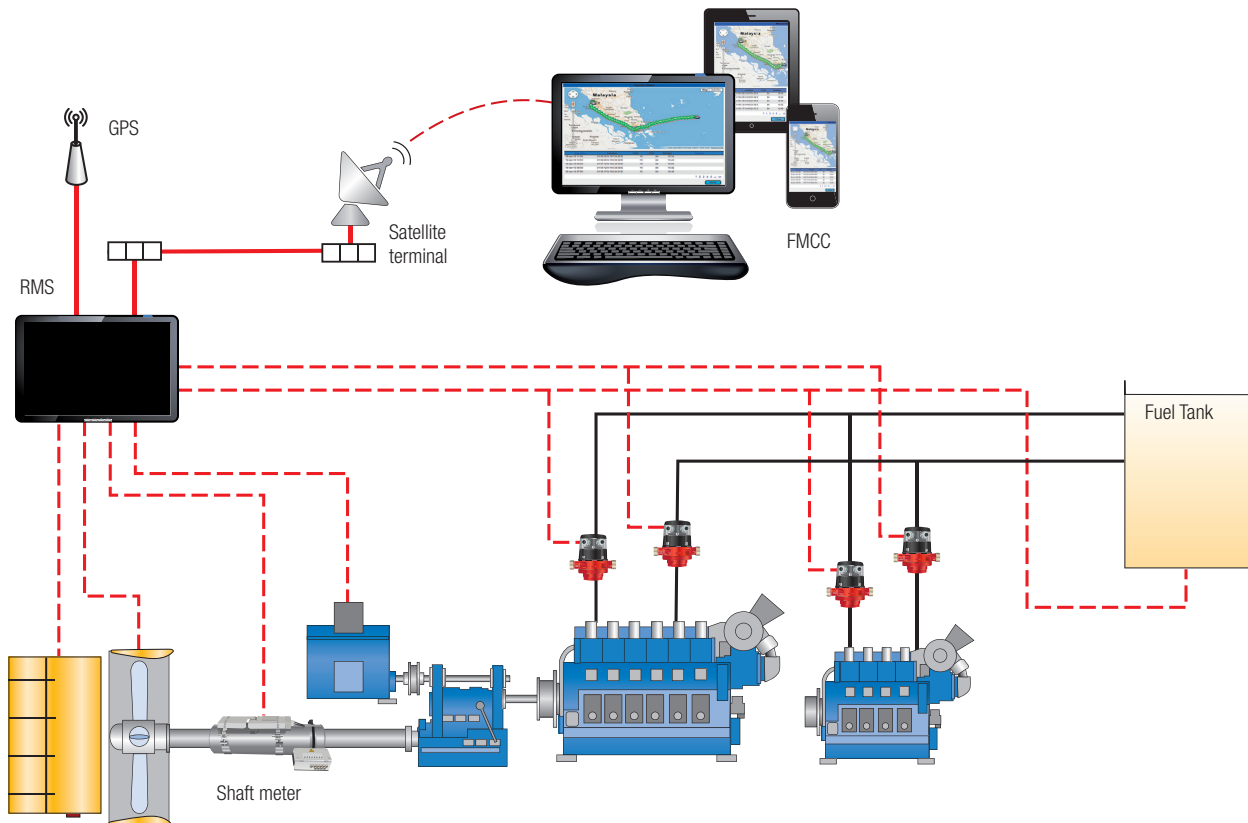
### Features

- Fuel transparency and optimisation
- Customizable monitoring systems
- Internet web portal for owners
- Discover and prevent fuel theft occurrences

### Benefits

- Full system provider
- View data with Desktop, Notebook, Tablet, iPhone
- Automated data transfer to shore
- Assured accuracy in Fuel Measurement

## System overview



## System installation

Supports multiple engines, bunkers and engines parameters.

### RMS – Remote Monitoring System (On-board)

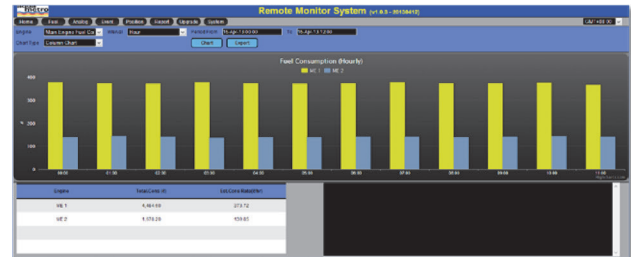
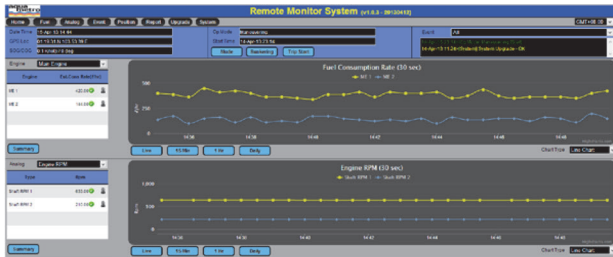
- Web Portal (Optional) for Captain/Chief Engineer's (C/E)
- Near real-time monitoring of fuel consumptions and engine parameters
- Performance charts and reports are available
- Regular (hourly) reports are sent back through On-board Satellite Terminal or other communication mode to shore server for notification and database updates
- Minimum human intervention is required
- Bunkering reports can be generated upon completion by the Chief Engineer (C/E)
- Trip reports that include full fuel consumptions during each new trip can be generated by the Captain or C/E
- Fuel performance charts are available for Captain or C/E to do comparison

### FMCC – Fleet Monitoring Control Centre (On-Shore)

- Owners can now perform fleet monitoring any time through PC or Mobile Devices (iPhone/tablets)
- Micro management of the fuel and engine performance for the fleet is also readily available
- Owners can compare individual vessels performance in terms of fuel consumptions
- Trip reports generated will give owners a clear indication of the total consumption for a particular trip
- Owners can submit requests for immediate position of the vessel and the total fuel consumption since the last report
- Historical request is also available
- Owners can view the tracking history including events that took place on his fleet

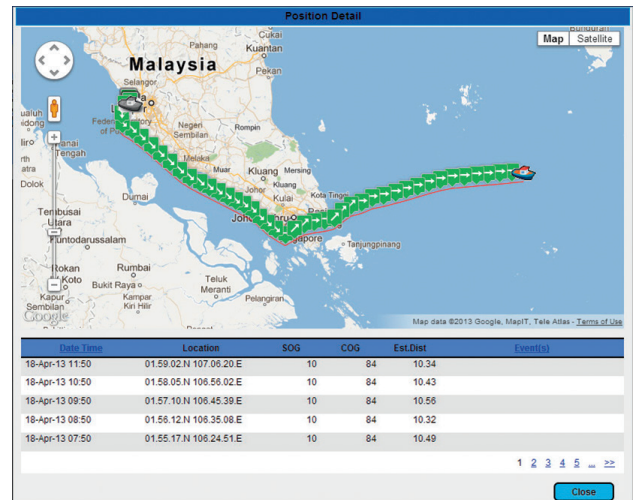
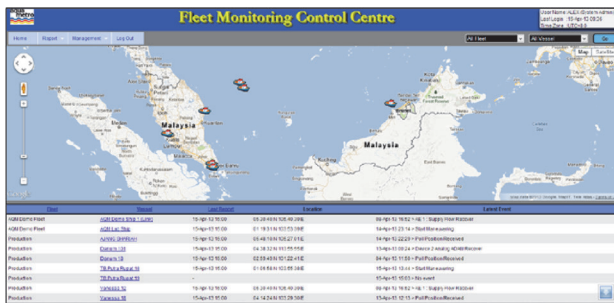
## Features

- Near real time monitoring onboard with live charts
- Vessel tracking (optional)
- Report generation
- Performance charts available for comparison
- Trip and bunkering management are also supported
- Automatic sending back daily reports
- Automatic sending back trip and bunkering reports after completion
- Automatic report system alerts to shore (remote module required), etc. power failure and other sensors notifications
- Tested and proven systems



## Benefits

- Easy overview
- Transparency of fuel consumption and engine performance
- Hourly update on ship's fuel consumption and engine information at your finger tips onshore.
- Low installation cost
- Short down time period
- Minimum maintenance required
- Extendable and fully customizable
- Speed monitoring and trigger events upon



## Satellite terminal (IDP-690)

- Easy installation
- Global coverage (A1+A2+A3)
- Robust design, light weight and small footprint
- Highly reliable
- Integrated with GPS receiver

Best sensors for highest system accuracy, as good input results in good output.



## CONTOIL® control VZF(A) II 15...50

- Electronic display for onsite verification
- Highest accuracy (better than 0.5 % in total)
- Paired calibration for use in supply and return measurement
- All meters with Marine Type approval (LR, DNV, RR and GL)
- Highest operational safety including burst pressure and flammable endurance tests
- Cost-effective due to minimum maintenance requirements
- Flexible to use in different fuels like heavy fuel oil (HFO, different grades), marine diesel oil (MDO) or diesel oil (DO)
- Integrated temperature sensor
- Mass & Massflow calculation
- Compareable to Coriolis meter



## Other Sensors

- For all other sensors onboard we are able to integrate them with standard signals like fire alarm, bilge alarm, engine trip, etc.

## Distributor in Hong Kong:

### Charles Marine Ltd

Phone: 2463 6261  
Email: [info@cmar.hk](mailto:info@cmar.hk)  
URL: [www.cmar.hk](http://www.cmar.hk)

<b>SWITZERLAND:</b>	<b>Aquametro Oil &amp; Marine AG, CH-4106 Therwil</b>	<b>info@aquametro-oil-marine.com</b>	<b>www.aquametro-oil-marine.com</b>
<b>CHINA:</b>	Aquametro Oil & Marine (CHINA) PTE. LTD., Singapore 757516	info@aquametro-oil-marine.cn	www.aquametro-oil-marine.cn
<b>GERMANY:</b>	Aquametro Oil & Marine GmbH, D-18119 Rostock	info@aquametro-oil-marine.de	www.aquametro-oil-marine.de
<b>INDIA:</b>	Aquametro Oil & Marine Rep. Office, Mumbai 400053	info@aquametro-oil-marine.in	www.aquametro-oil-marine.in
<b>JAPAN:</b>	Aquametro Oil & Marine Rep. Office, Tokyo 152-0031	info@aquametro-oil-marine.jp	www.aquametro-oil-marine.jp
<b>KOREA:</b>	Aquametro Oil & Marine Korea LTD., Busan 612-857	info@aquametro-oil-marine.kr	www.aquametro-oil-marine.kr
<b>SINGAPORE:</b>	Aquametro Oil & Marine (S.E.A.) PTE. LTD., Singapore 757516	info@aquametro-oil-marine.sg	www.aquametro-oil-marine.sg
<b>UAE:</b>	Aquametro ME JLT, Dubai / UAE	info@aquametro-oil-marine.ae	www.aquametro-oil-marine.ae